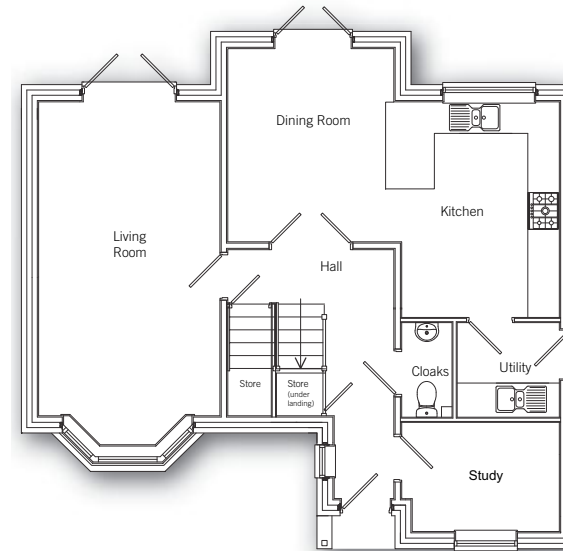
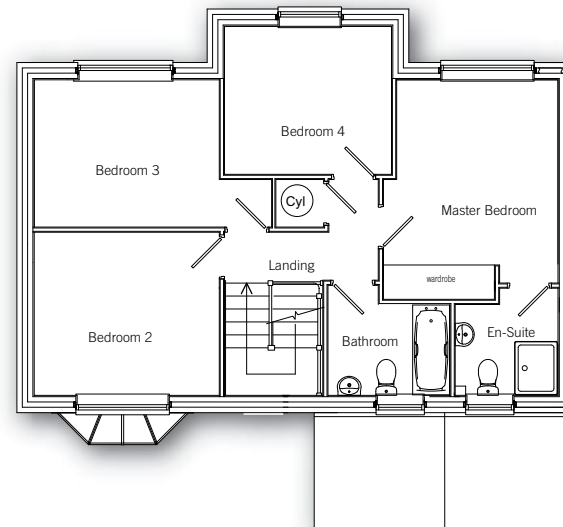


THE KNIVETON



Ground floor

Living Room	3.45m x 6.44m (max) (11' 3" x 21' 1") (max)
Dining Room	3.16m x 3.67m (10' 4" x 12' 0")
Kitchen	3.00m x 4.10m (9' 8" x 13' 5")
Utility	1.80m x 1.94m (5' 9" x 6' 4")
Study	2.12m x 3.00m (6' 10" x 9' 8")



First floor

Master Bedroom	3.30m x 3.83m (max) (10' 8" x 12' 6") (max)
Bedroom 2	3.09m x 3.50m (10' 1" x 11' 5")
Bedroom 3	2.79m x 4.47m (max) (9' 2" x 14' 7") (max)
Bedroom 4	2.80m x 3.16m (9' 2" x 10' 4")