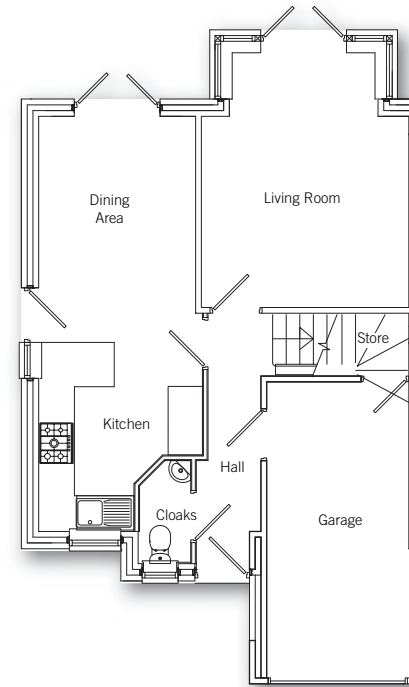
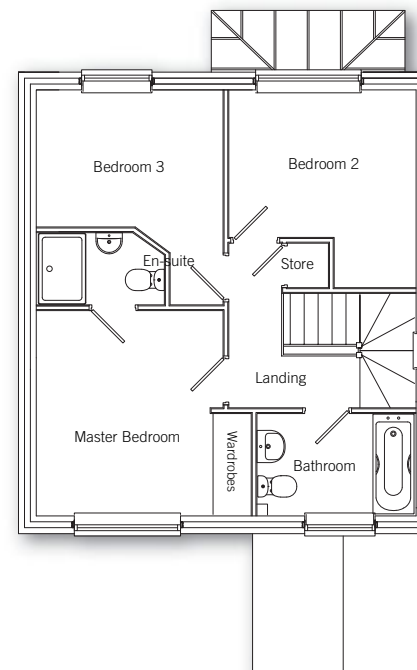


# THE Highbury



## Ground floor

Living Room	4.43m x 3.69m (max) 14' 6" x 12' 1" (max)
Kitchen/Dining Area	7.21m x 2.69m (max) 23' 6" x 8' 10" (max)



## First floor

Master Bedroom	3.75m x 3.47m (max) 12' 4" x 11' 4" (max)
Bedroom 2	3.36m x 3.16m (max) 11' 1" x 10' 4" (max)
Bedroom 3	3.64m x 3.27m (max) 11' 11" x 10' 9" (max)