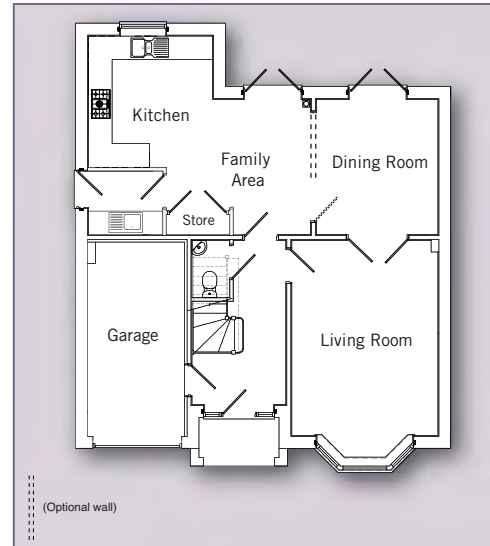
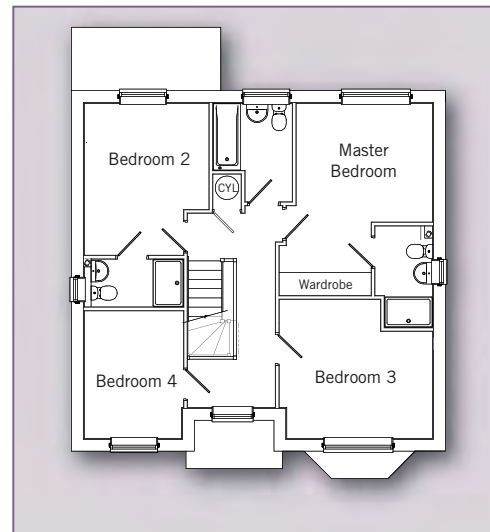


the Medway



Ground floor

Living Room	3.72m x 5.43m (max) 12'2" x 17'8" (max)
Dining Room (If wall in place)	3.13m x 3.44m (max) 10'3" x 11'3" (max)
Family Area	3.44m x 3.62m (max) 11'3" x 11'9" (max)
Kitchen	3.17m x 3.21m (max) 10'4" x 10'6" (max)
Utility	1.71m x 1.95m 5'6" x 6'4"



First floor

Master Bedroom	3.73m x 4.93m (max) 12'2" x 16'2" (max)
Bedroom 2	3.19m x 3.87m (max) 10'5" x 12'7" (max)
Bedroom 3	3.92m x 3.53m (max) 12'9" x 11'6" (max)
Bedroom 4	2.54m x 3.28m (max) 8'3" x 10'8" (max)