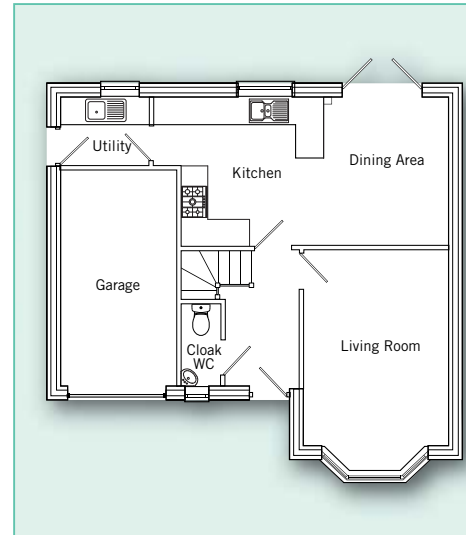
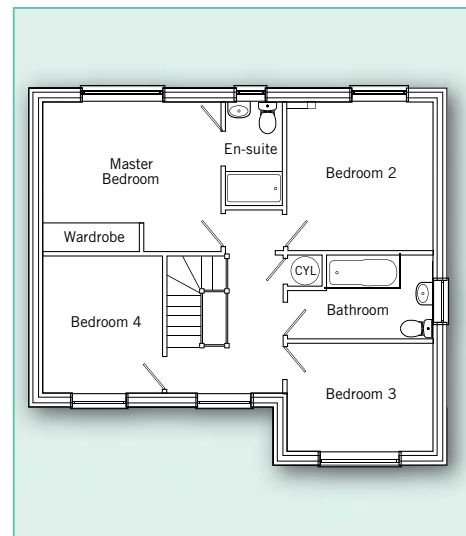


# the Fairfield



## Ground floor

Living Room	3.26m x 4.91m (max) 10' 7" x 16'1" (max)
Dining Area	2.70m x 3.40m (max) 8'9" x 11'2" (max)
Kitchen	4.17m x 3.4m (max) 13'7" x 11'2" (max)
Utility	1.60m x 1.80m (max) 5'3" x 5'9" (max)



## First floor

Master Bedroom	4.11m x 3.46m (max) 13'5" x 11'4" (max)
Bedroom 2	3.26m x 3.45m 10'7" x 11'3"
Bedroom 3	2.45m x 3.26m 8'0" x 10'7"
Bedroom 4	2.67m x 3.09m 8'8" x 10'2"