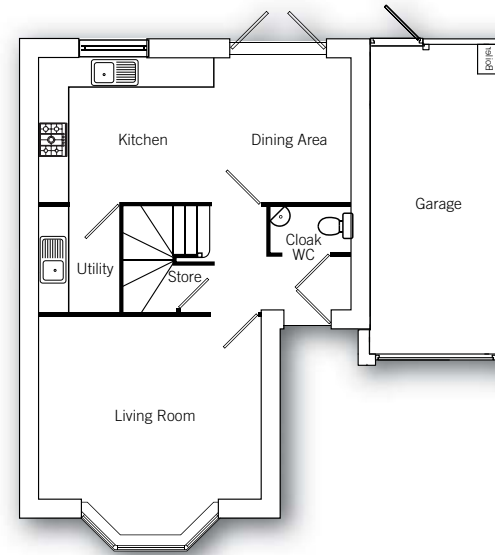
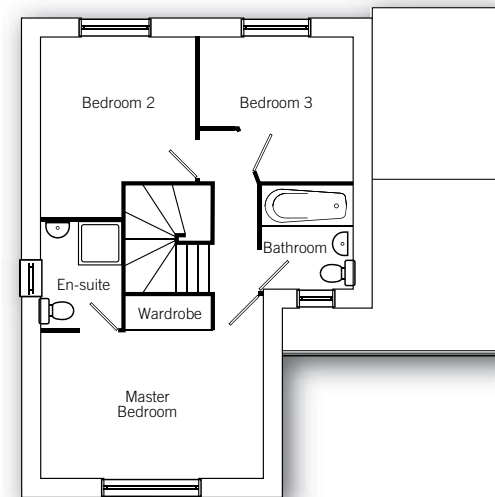


# THE PINewood



## Ground floor

Living Room	3.80m x 4.17m (max) 12' 6" x 13' 8" (max)
Kitchen/Dining Area	5.8m x 2.75m (max) 19' 2" x 9' 0" (max)
Utility	1.95m x 1.53m 6' 5" x 5' 0"



## First floor

Master Bedroom	4.17m x 3.39m (max) 13' 8" x 11' 1" (max)
Bedroom 2	3.43m x 3.05m (max) 11' 3" x 10' 0" (max)
Bedroom 3	2.71m x 2.70m (max) 8' 11" x 8' 11" (max)