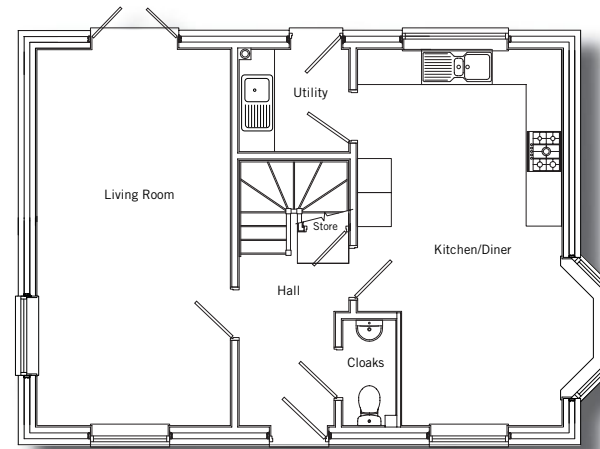
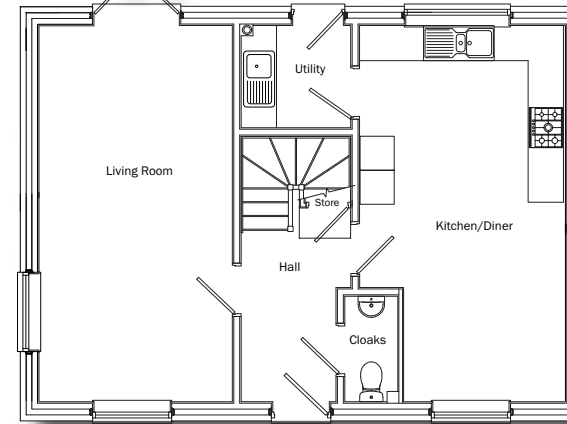


THE RICHMOND



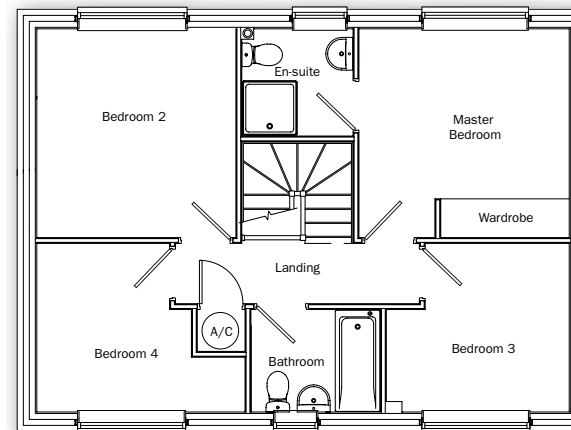
Ground floor

Richmond with bay window



Living Room	3.27m x 6.42m 10'9" x 21'1"
Kitchen/Diner	6.42m x 3.46m (max) 21'1" x 11'4" (max)
Utility	1.74m x 1.86m 5'8" x 6'1"

Richmond without bay window



First floor

Master Bedroom	3.50m x 3.52m (max) 11'6" x 11'7" (max)
Bed 2	3.33m x 3.50m (max) 10'11" x 11'6" (max)
Bed 3	3.06m x 2.82m (max) 10'1" x 9'3" (max)
Bed 4	2.82m x 3.47m (max) 9'3" x 11'4" (max)