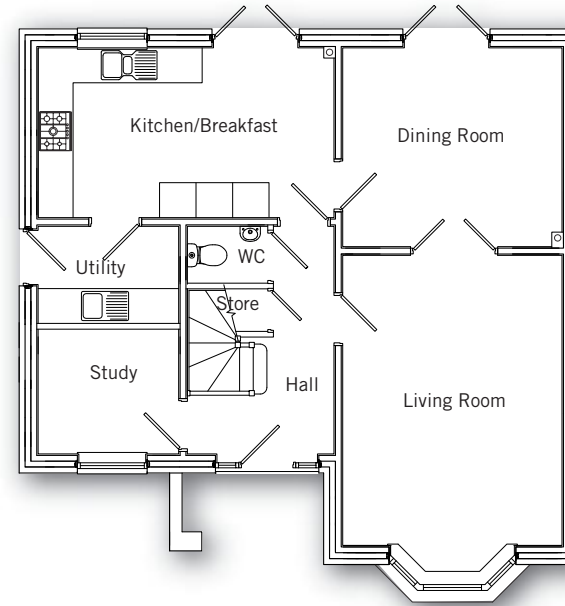
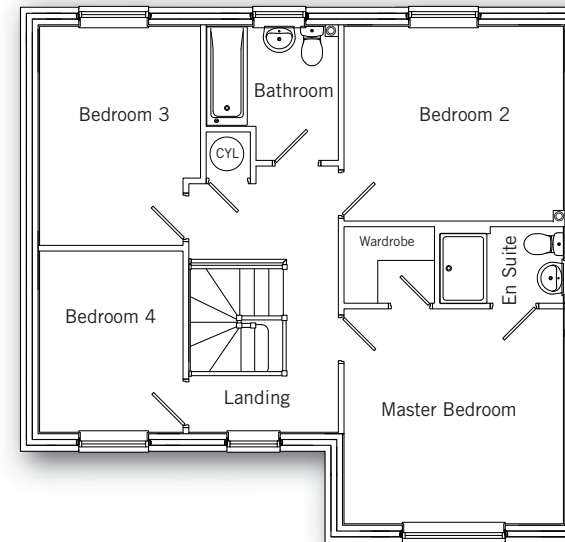


THE KINGSFORD



Ground floor

Kitchen/Breakfast	5.13m x 2.87m 16'8" x 9'5"
Living Room	5.46m x 3.72m (max) 17'9" x 12'2" (max)
Dining Room	3.72m x 3.42m 12'2" x 11'2"
Study	2.15m x 2.42m 7'0" x 7'11"
Utility	2.42m x 1.71m 7'9" x 5'7"



First floor

Master Bedroom	3.72m x 3.70m 12'2" x 12'1"
Bedroom 2	3.72m x 3.35m 12'2" x 11'0"
Bedroom 3	3.78m x 2.77m (max) 12'4" x 9'1" (max)
Bedroom 4	3.11m x 2.48m 10'2" x 8'1"