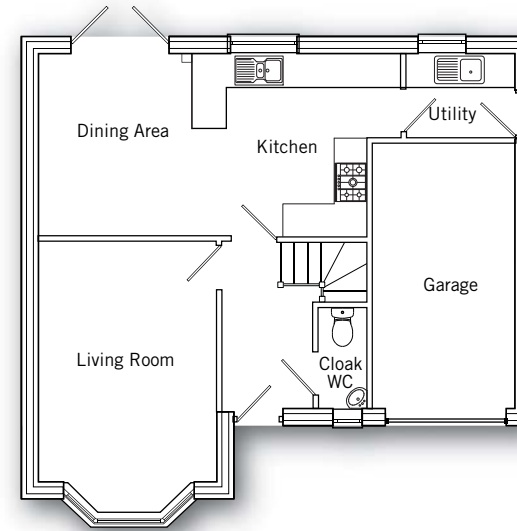
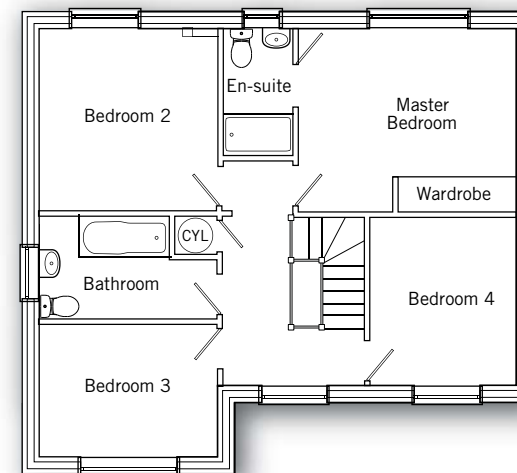


THE FAIRFIELD



Ground floor

Living Room	3.26m x 4.91m (max) 10' 7" x 16' 1" (max)
Dining Area	2.70m x 3.40m (max) 8' 10" x 11' 2" (max)
Kitchen	4.17m x 3.4m (max) 13' 8" x 11' 2" (max)
Utility	1.60m x 1.80m (max) 5' 3" x 5' 10" (max)



First floor

Master Bedroom	4.11m x 3.46m (max) 13' 6" x 11' 4" (max)
Bedroom 2	3.26m x 3.46m 10' 8" x 11' 4"
Bedroom 3	2.45m x 3.26m 8' 0" x 10' 8"
Bedroom 4	2.68m x 3.10m 8' 9" x 10' 1"