



Rochester

5 Bedroom House with Dining Room and Study

Kitchen
3.73m x 5.97m / 12'3" x 19'7"

Living Room
7.12m x 3.83m / 23'4" x 12'7"

Dining Room
4.30m x 3.10m / 14'1" x 10'2"

Study
2.87m x 2.18m / 9'5" x 7'2"

Utility
2.20m x 2.18m / 7'3" x 7'2"

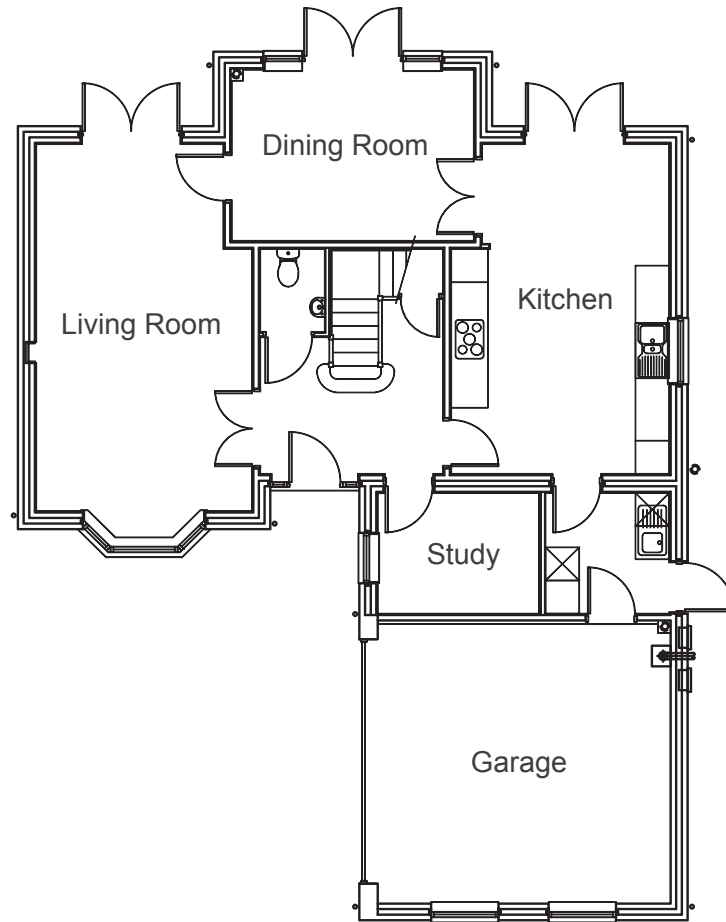
Master Bedroom
7.38m x 5.03m / 24'3" x 16'6"

Bedroom 2
4.09m x 3.58m / 13'5" x 11'9"

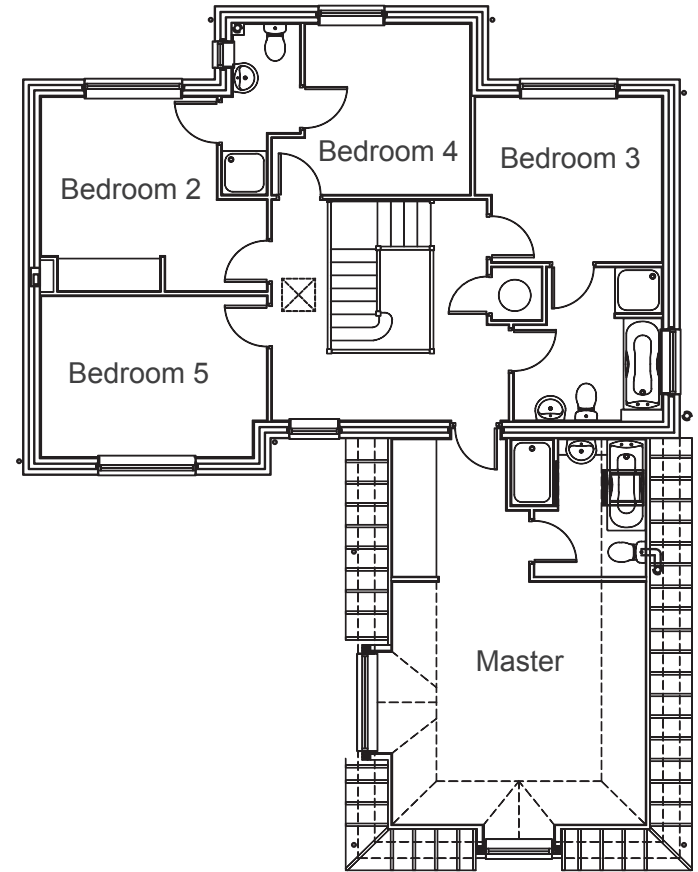
Bedroom 3
3.38m x 3.05m / 11'1" x 10'

Bedroom 4
3.59m x 3.15m / 11'9" x 10'4"

Bedroom 5
4.09m x 2.97m / 13'5" x 9'9"



(Ground Floor)



(First Floor)