



# Medway

4 Bedroom House with two en-suites

## Kitchen

3.16 x 2.64m / 10'4" x 8'8"

## Living Room

4.96 x 3.72 / 16'3" x 12'3"

## Dining Room

3.10 x 3.44m / 10'2" x 11'4"

## Utility

2.54 x 1.60m / 8' x 5'3"

## Master Bedroom

4.86 x 3.92m / 15'11" x 12'10"

## Bedroom 2

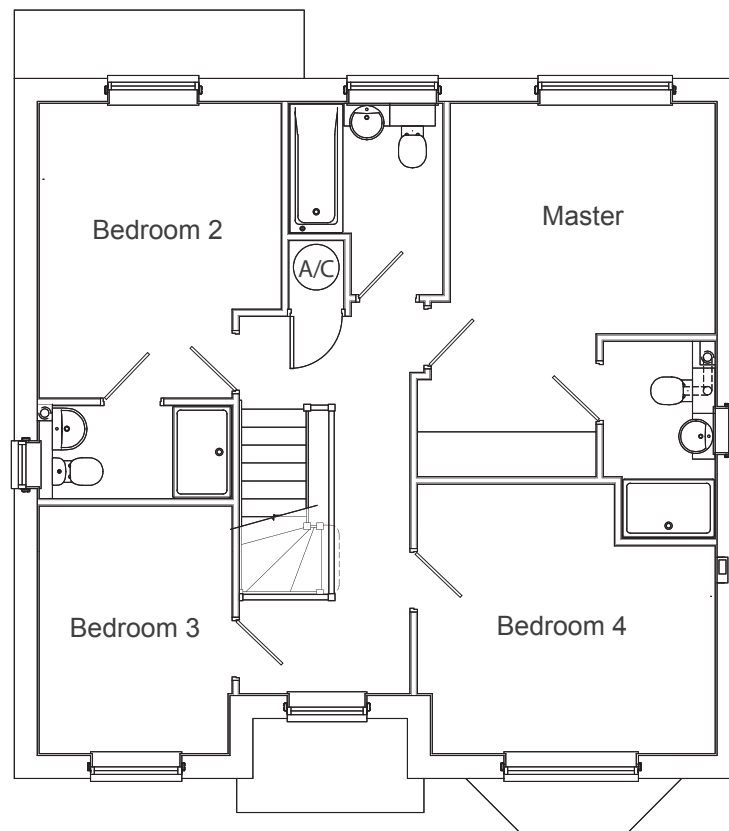
3.60 x 3.20m / 11'10" x 10'6"

## Bedroom 3

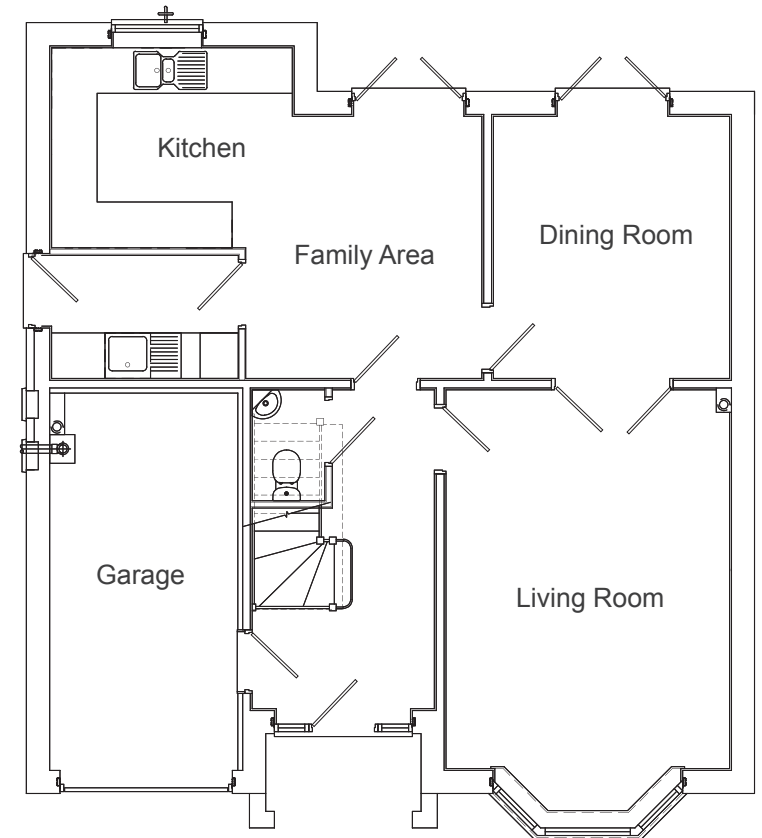
3.90 x 2.96m / 12'10" x 9'8"

## Bedroom 4

3.26 x 2.50m / 10'8" x 8'2"



(Ground Floor)



(First Floor)