



# Birchwood

4 Bedroom House with Reception and Dining Room

## Kitchen / Breakfast

5.05m x 3.13m / 16'6" x 10'3"

## Living Room

5.37m x 3.44m / 17'6" x 11'3"

## Dining Room

3.13m x 2.85m / 10'3" x 9'4"

## Utility

1.79m x 1.56m / 5'10" x 5'1"

## Master Bedroom

4.38m x 3.44m / 14'4" x 11'3"

## Bedroom 2

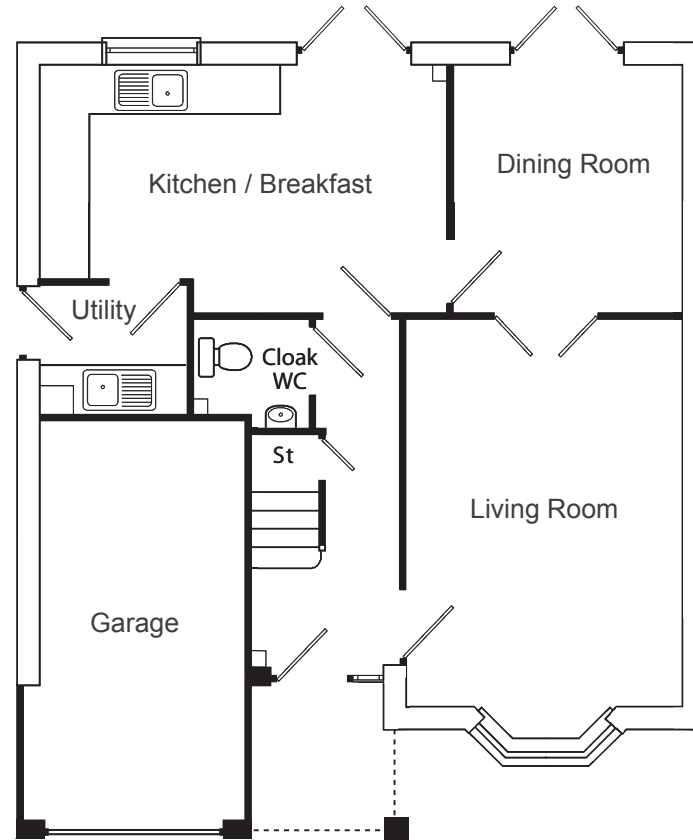
3.67m x 3.43m / 12'0" x 11'3"

## Bedroom 3

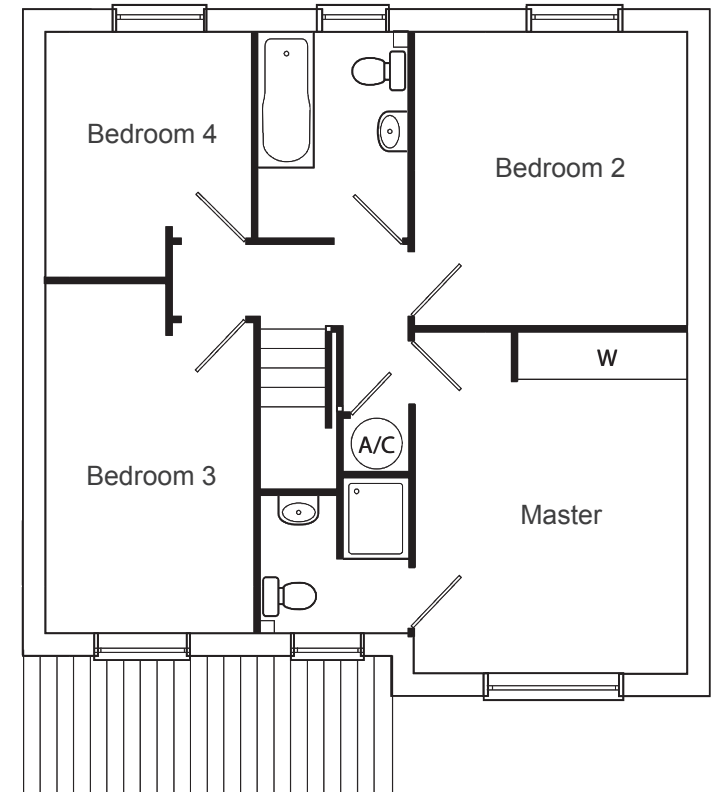
4.42m x 2.56m / 14'6" x 8'4"

## Bedroom 4

3.08m x 2.56m / 10'1" x 8'4"



(Ground Floor)



(First Floor)